

14A HTR.

14A ACY

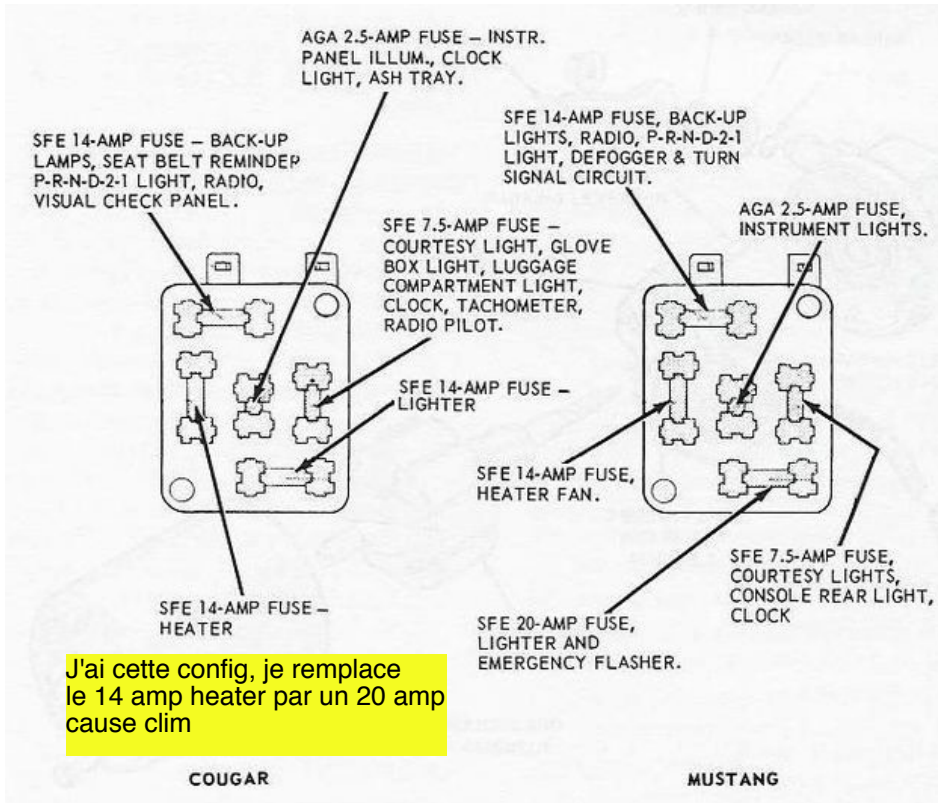
14A CIB.

2.5 INST. LT.

7.5A DOME

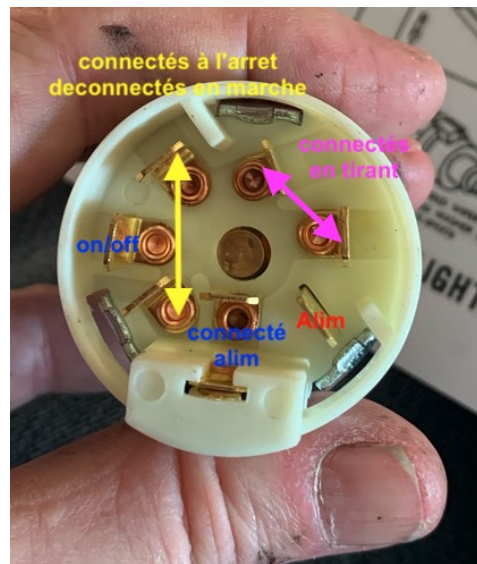
14A CIB.

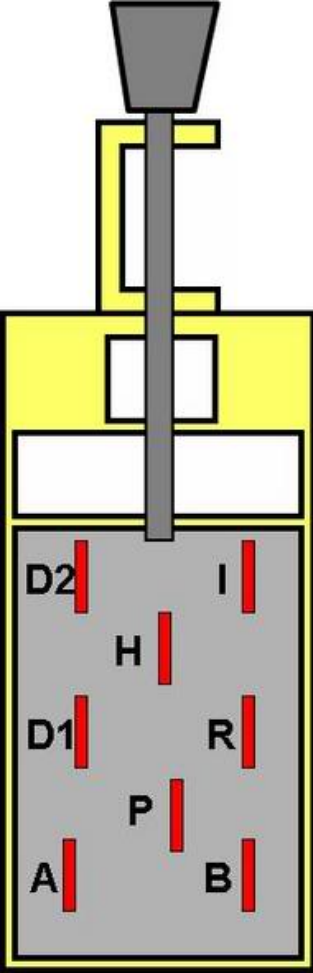
14A CIB.



J'ai cette config, je remplace le 14 amp heater par un 20 amp cause clim

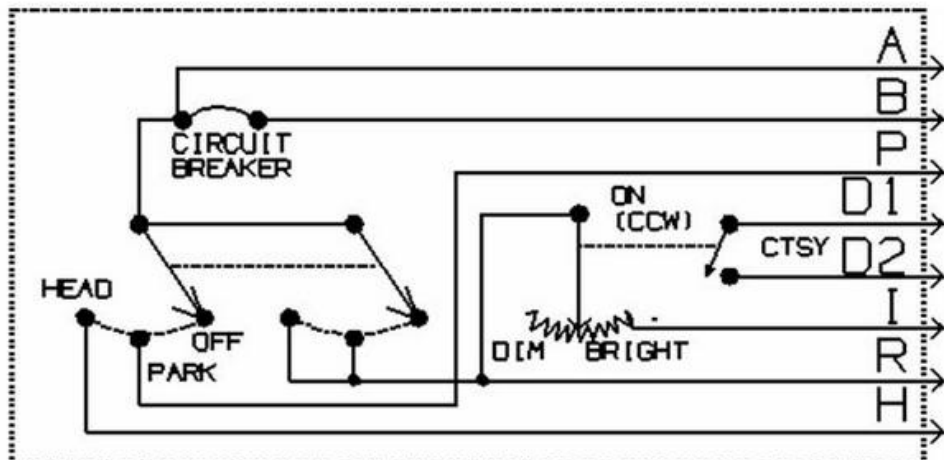
3 x SFE 14 ampères fusibles (1/4 po x 1-1/16 po, 32V 14 a)  
 1 x SFE 7,5 ampères (1/4 « x 7/8 », 32V 7.5 a)  
 1 x AGA 2,5 ampères (1/4 po x 5/8 po, 32V 2,5 a)

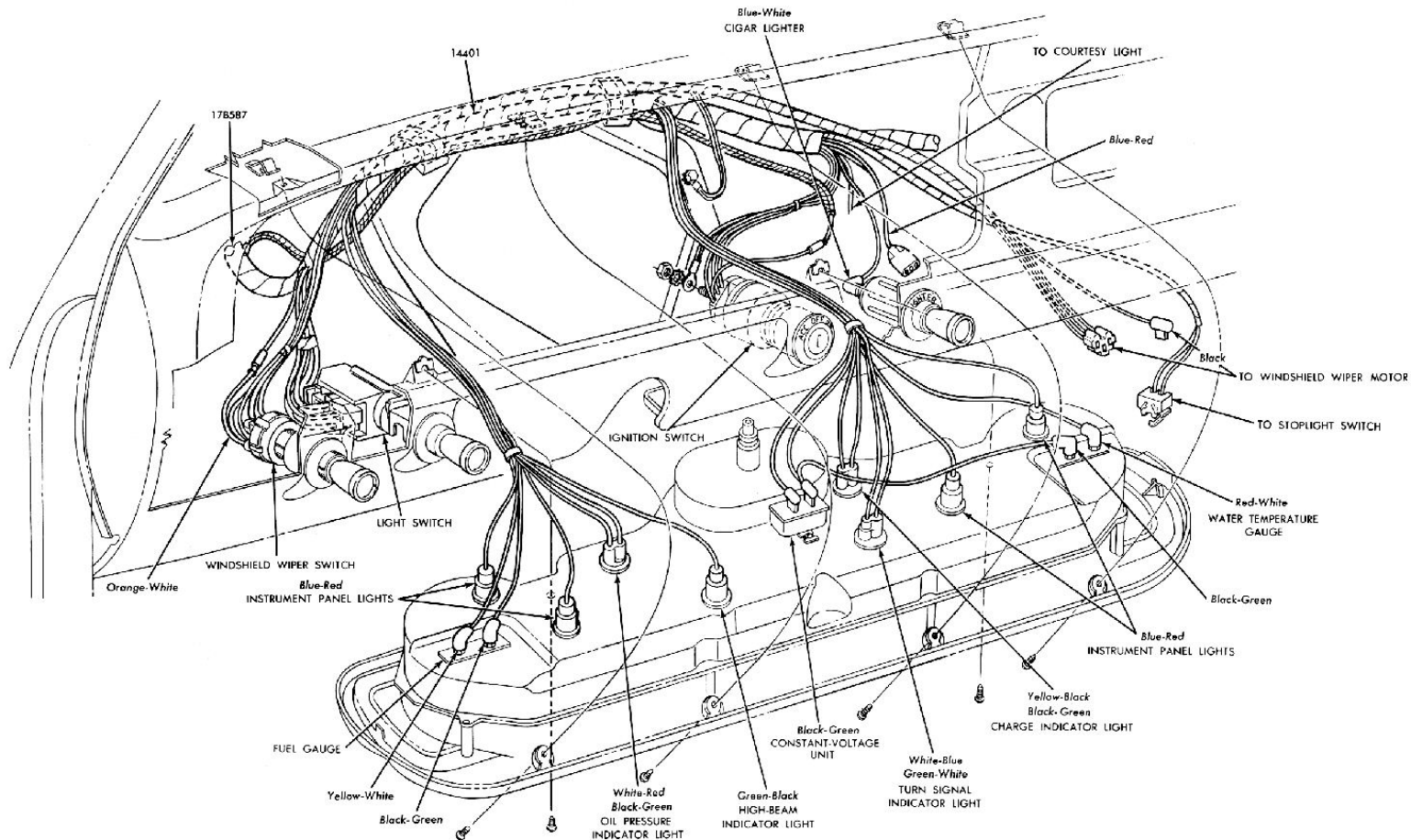




- B** - Battery Feed
- R** - Tail Lamps
- I** - Dash Ind (thru fuse)
- P** - Front Park Lamps
- H** - Headlights
- A** - Brake Switch Feed
- D1** - Courtesy Lamp Fuse
- D2** - Courtesy Lamps

- Blk/Org**
- Blk**
- Blu/Red**
- Blk/Yel**
- Red/Yel**
- Grn/Red**
- Grn/Yel**
- Blk/Blu**





## 1965 MUSTANG INSTRUMENT PANEL WITH ALTERNATOR CHARGING SYSTEM



Summary:

left big connector: battery plus

right big connector: starter (there is only one connector on the starter). It gets its minus/ground from the engine block.

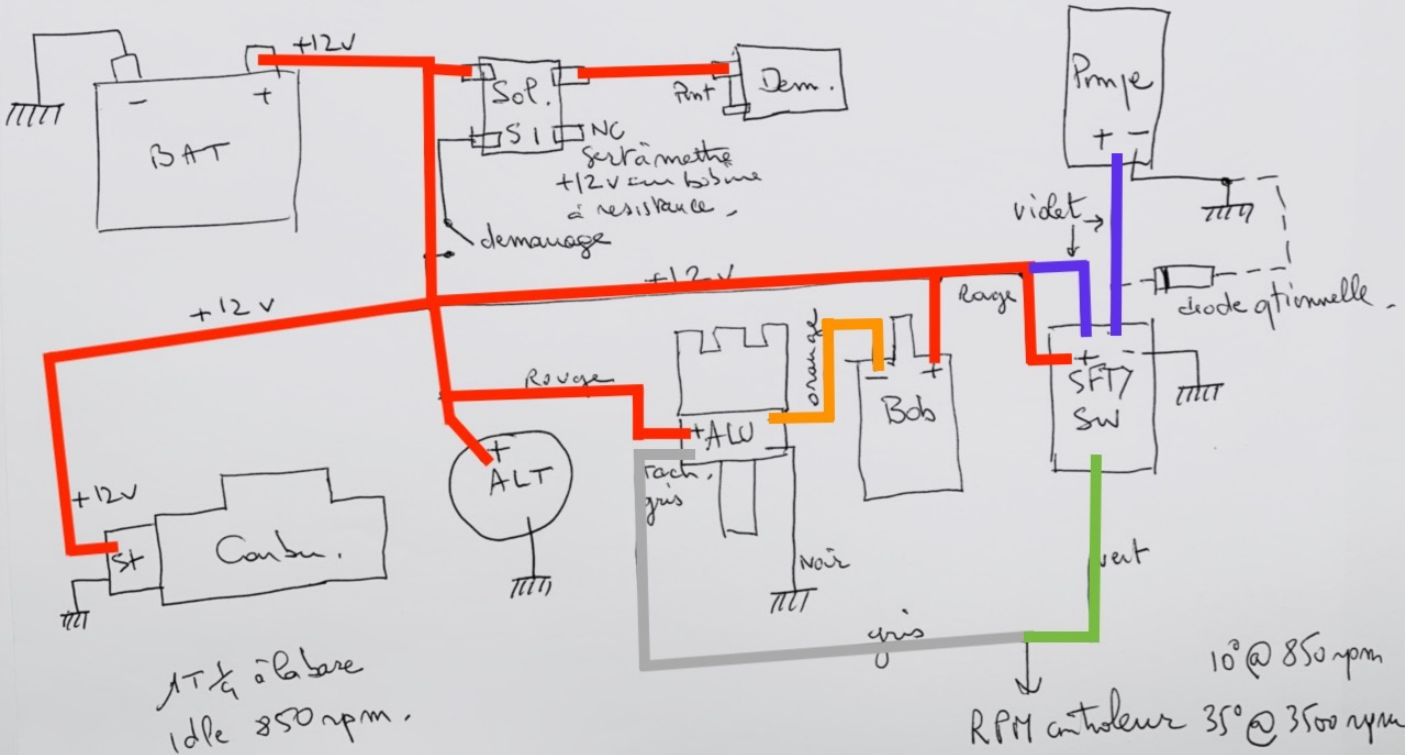
small connector 'S': ignition switch 'S' connector (goes through firewall connector)

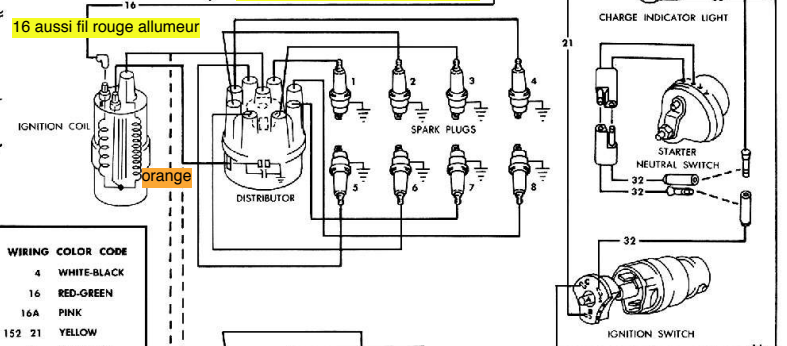
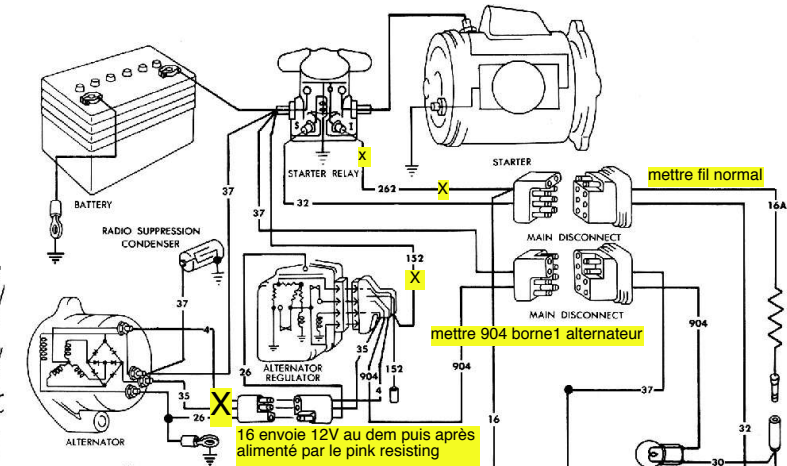
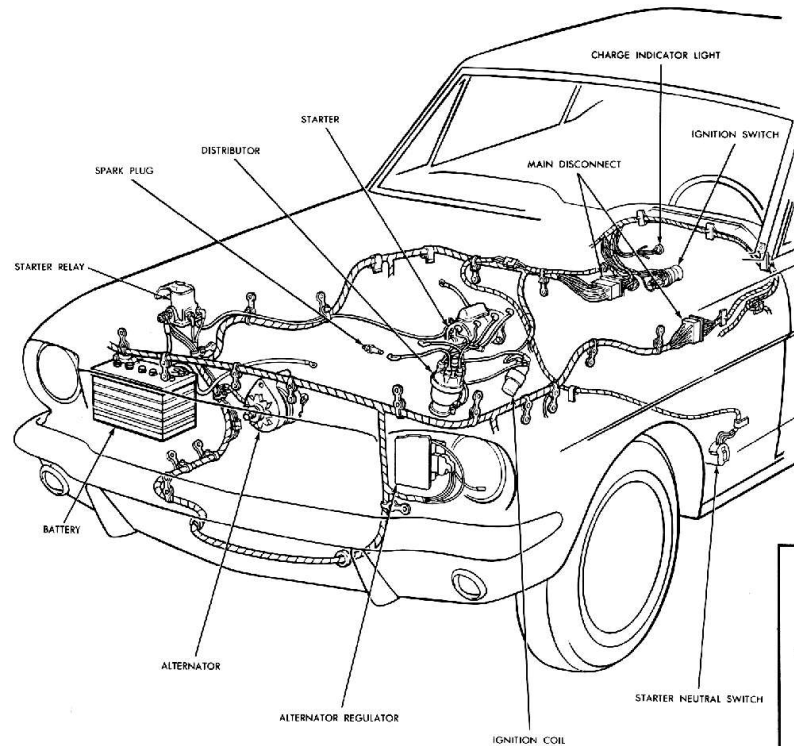
The 4th connector ('I' for ignition) has only a simple purpose:

Factory coil is getting 7.5V during run. This is not enough for starting the engine (works fine once started, but problematic during the starting process).

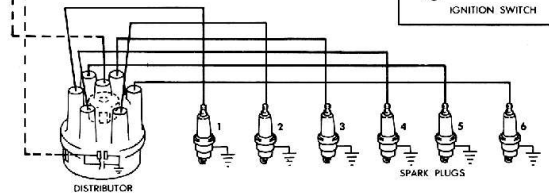
So when you start the engine the 'I' port gets 12V+ as well which leads to coil+. only low amps needed hence a thin cable.

This is not needed for the starter to be able to turn.



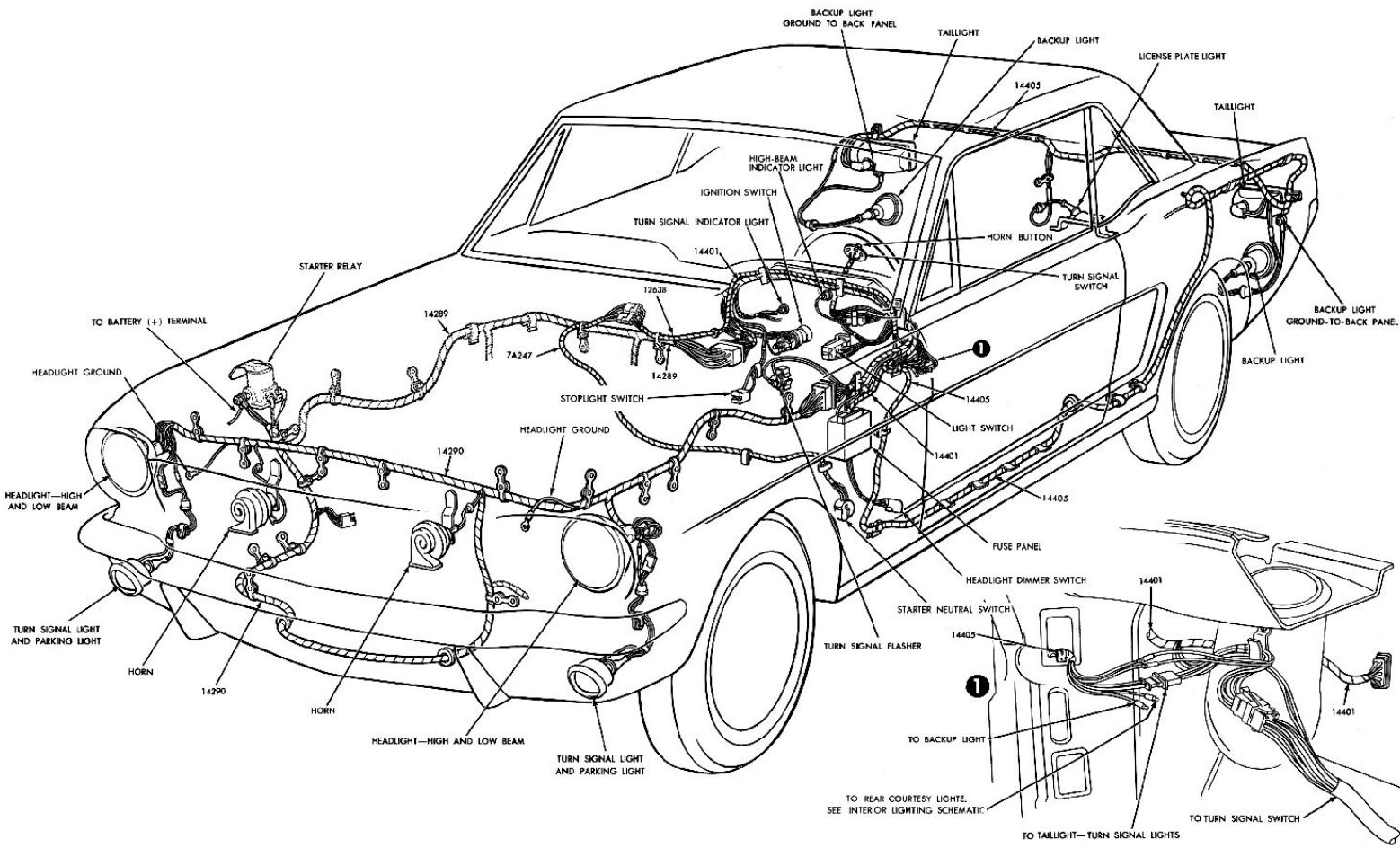


WIRING COLOR CODE	
4	WHITE-BLACK
16	RED-GREEN
16A	PINK
152 21	YELLOW
26	BLACK-RED
30	BLACK-GREEN
32	RED-BLUE
35	WHITE
37	BLACK-YELLOW
262	BROWN
904	GREEN-RED
●	SPLICE

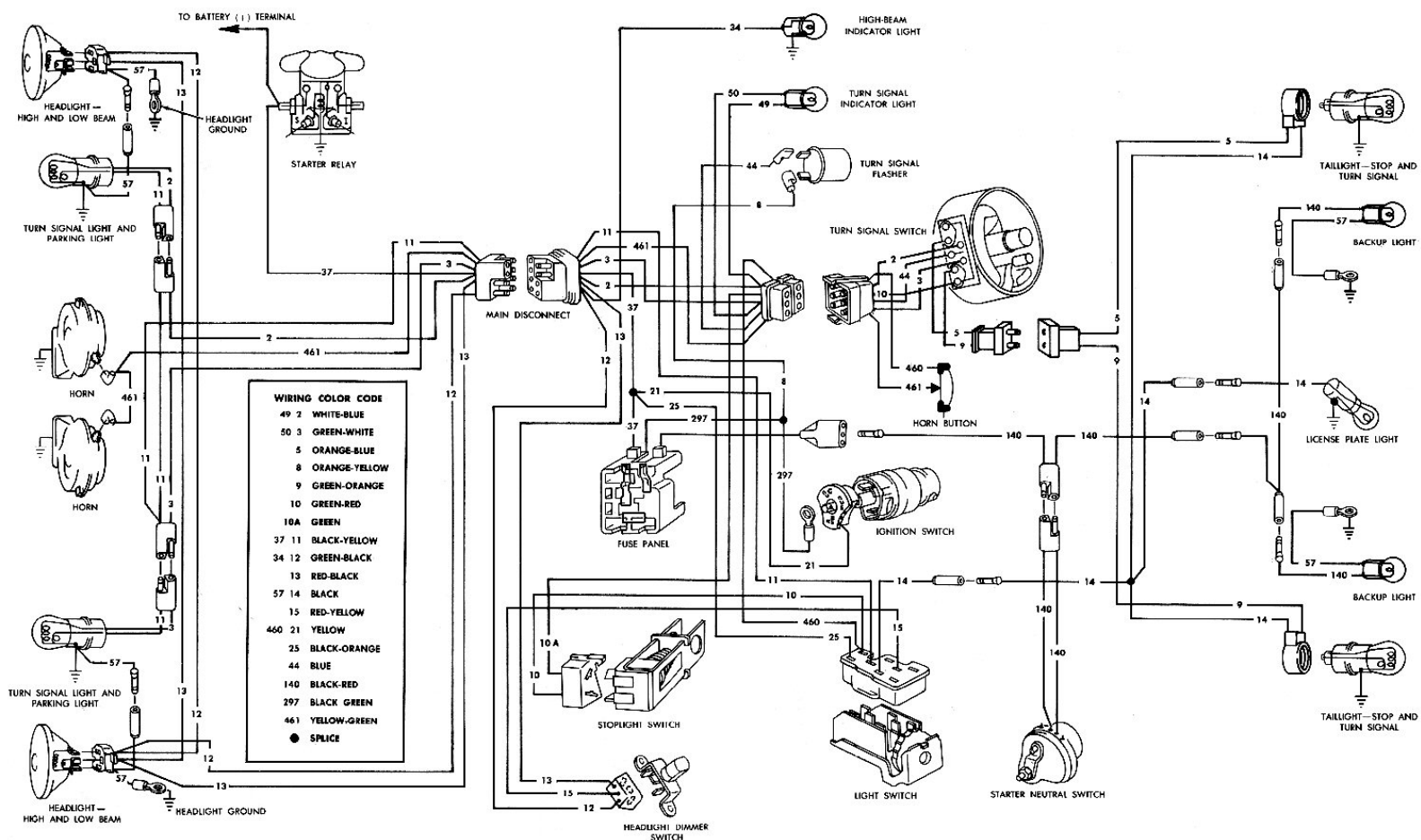


# 1965 MUSTANG IGNITION, STARTING AND CHARGING

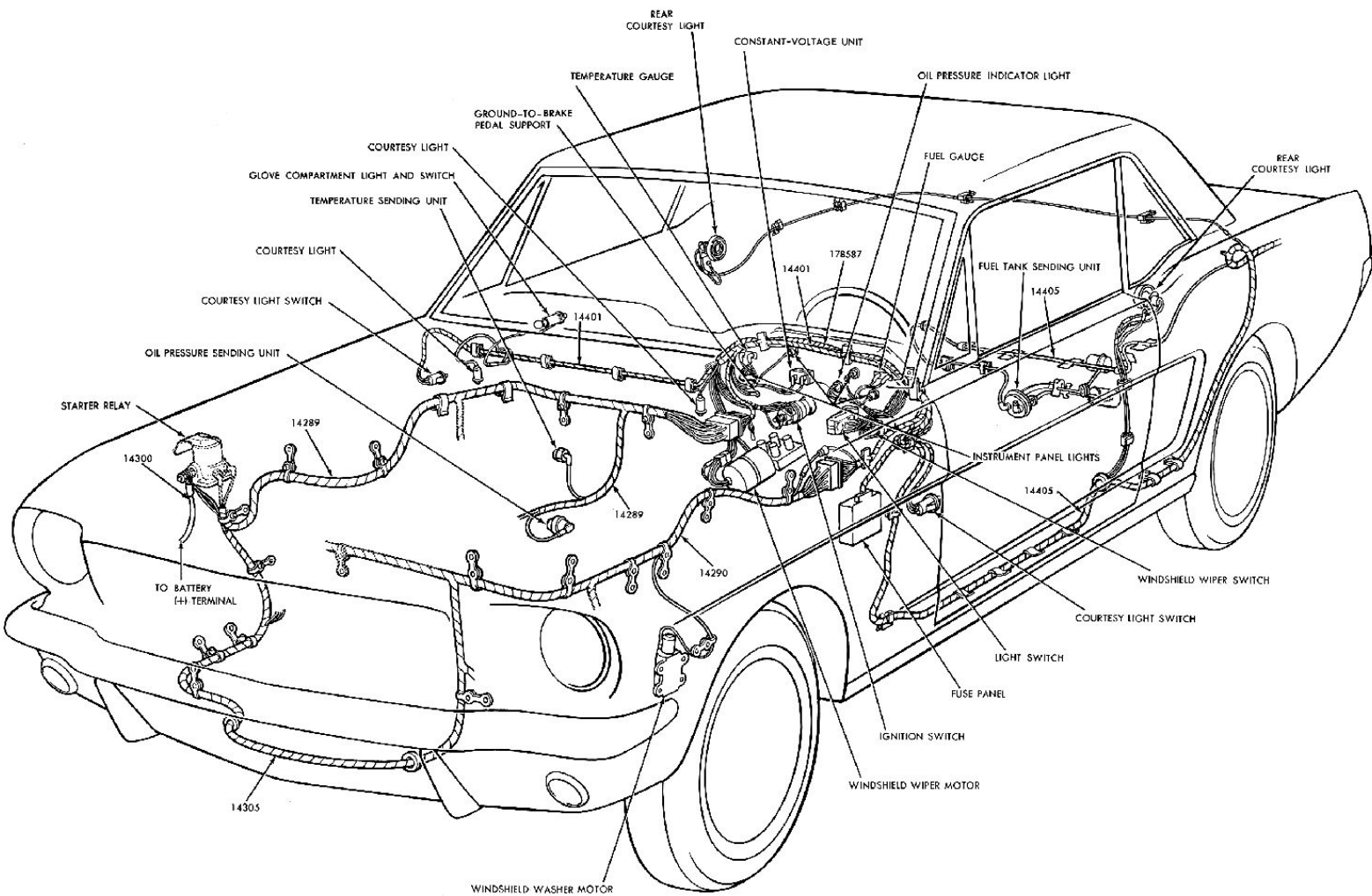




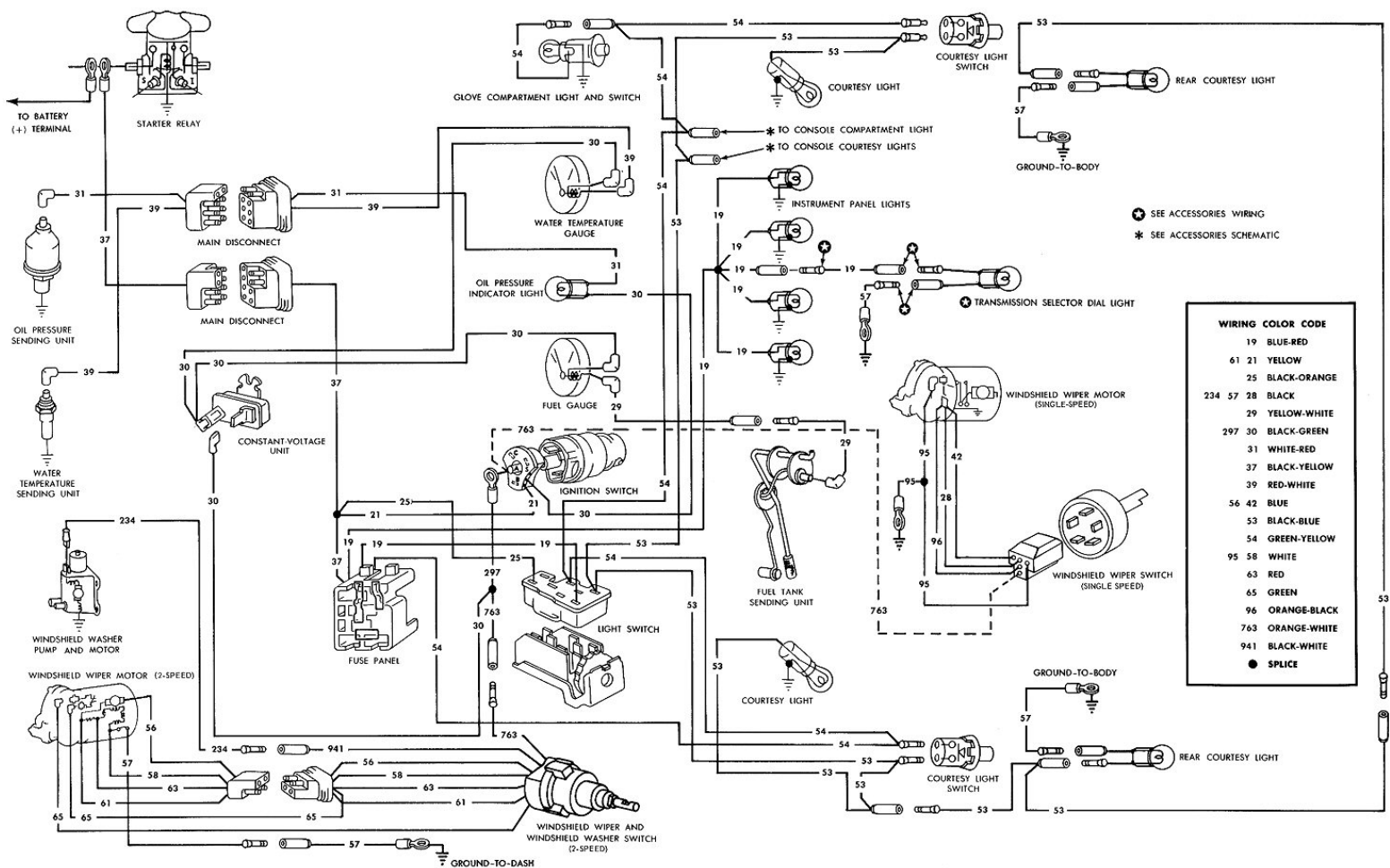
**1965 MUSTANG EXTERIOR LIGHTING, TURN SIGNALS AND HORNS**



**1965 MUSTANG EXTERIOR LIGHTING, TURN SIGNALS AND HORNS**

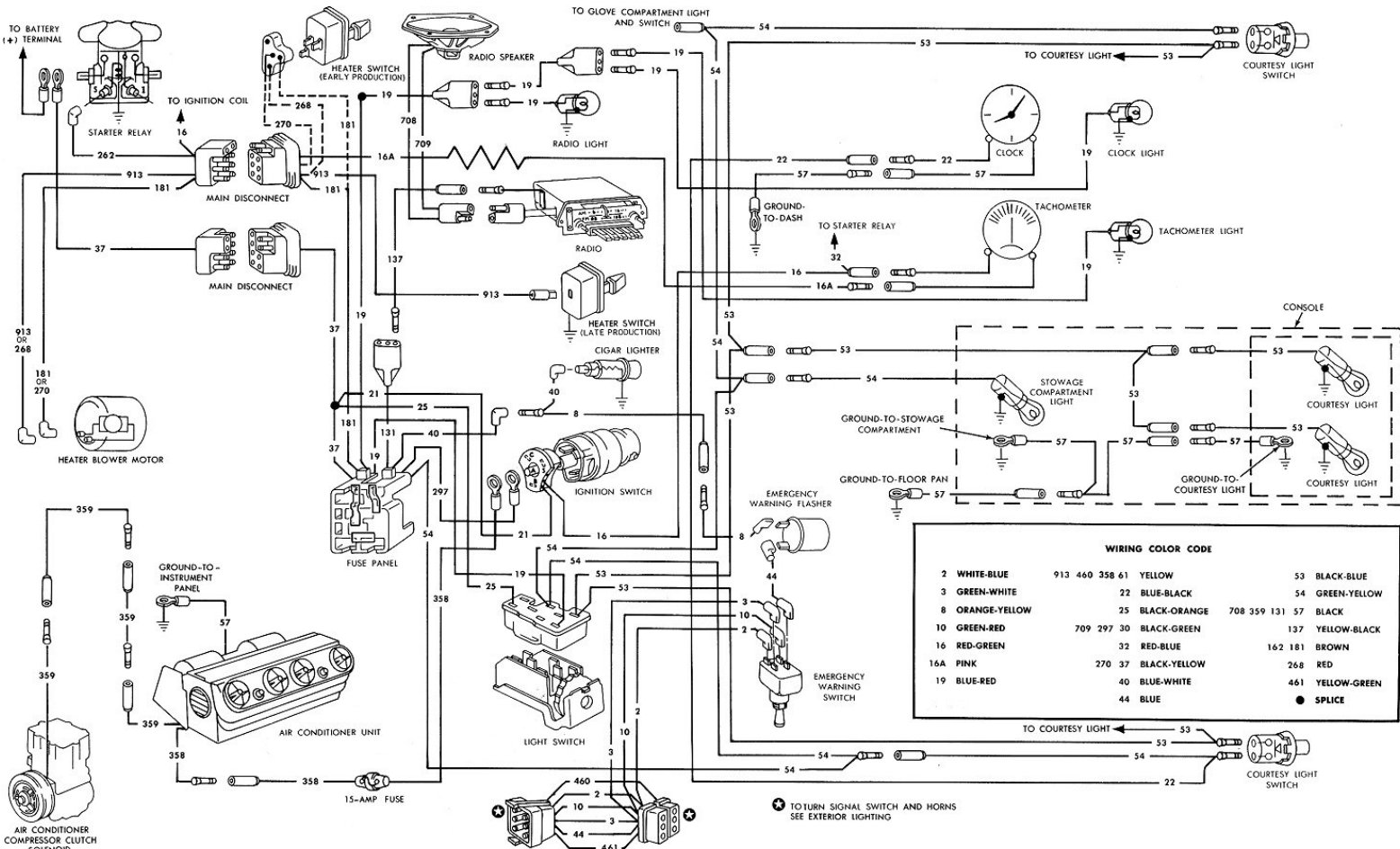


**1965 MUSTANG INTERIOR LIGHTING, WINDSHIELD WIPERS AND GAUGES**



**1965 MUSTANG INTERIOR LIGHTING, WINDSHIELD WIPERS AND GAUGES**

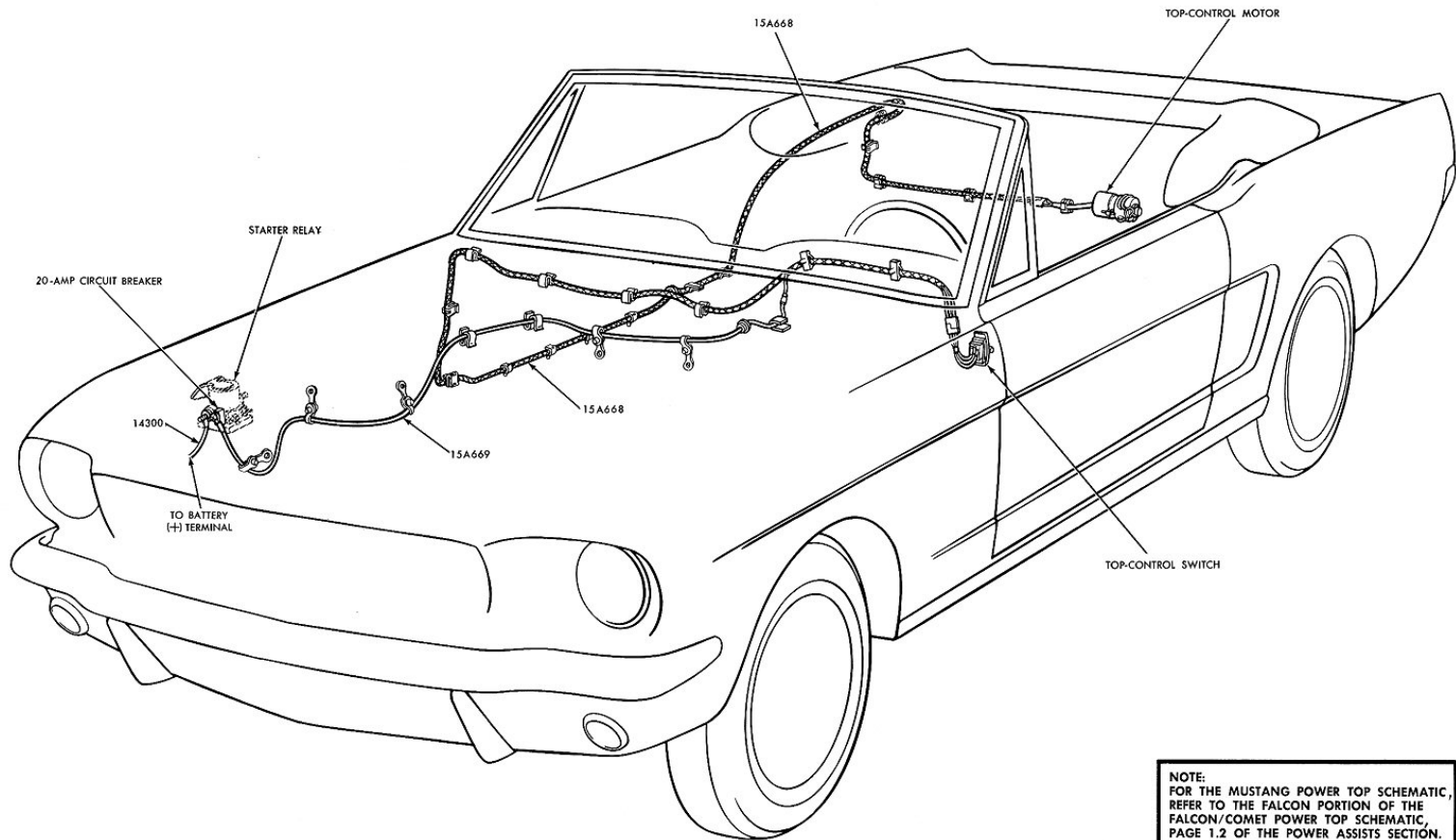




**WIRING COLOR CODE**

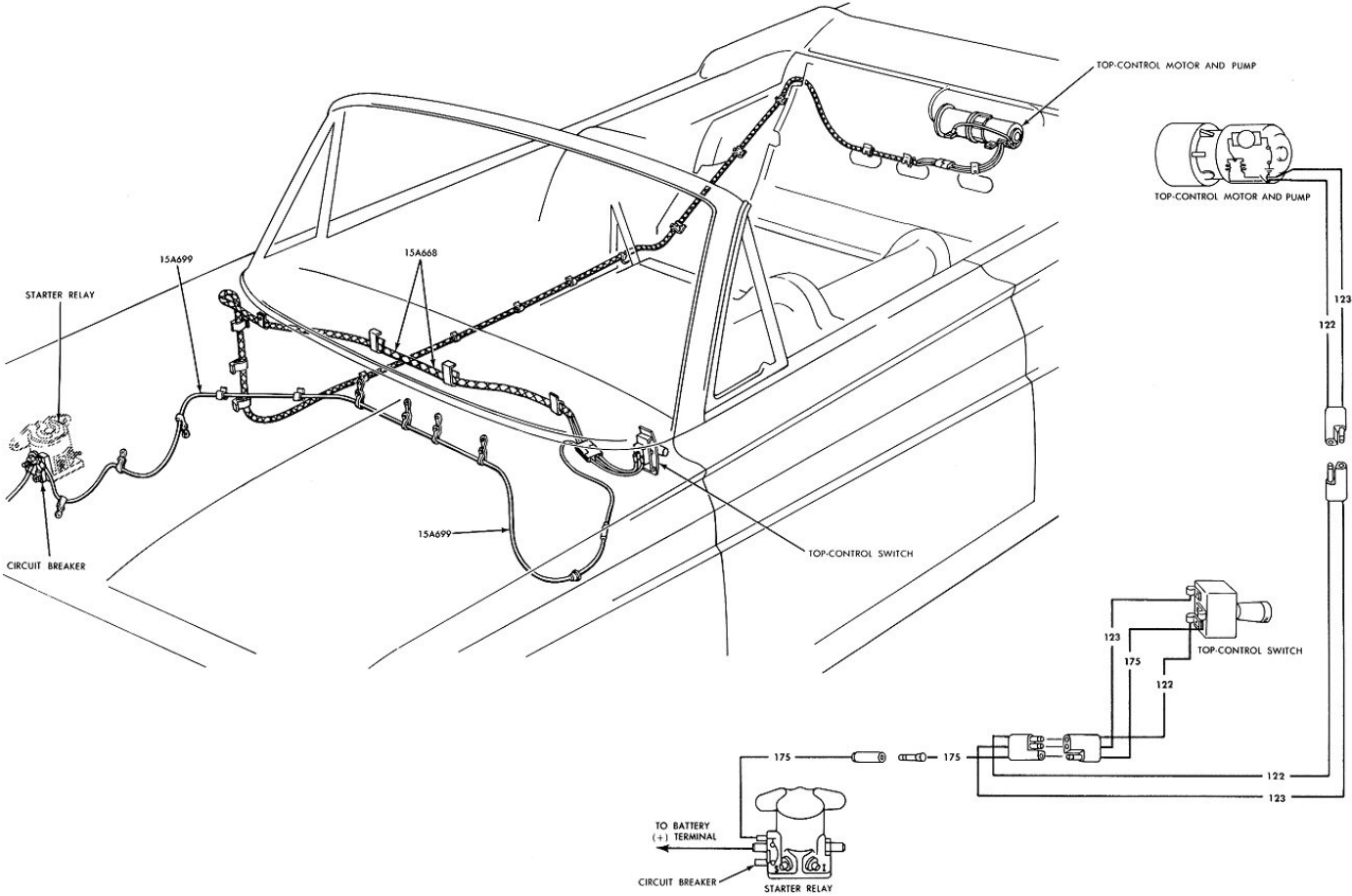
2	WHITE-BLUE	913	460	358	61	YELLOW	53	BLACK-BLUE
3	GREEN-WHITE	22	BLUE-BLACK	54	GREEN-YELLOW			
8	ORANGE-YELLOW	25	BLACK-ORANGE	708	359	131	57	BLACK
10	GREEN-RED	709	297	30	BLACK-GREEN	137	YELLOW-BLACK	
16	RED-GREEN	32	RED-BLUE	162	181	BROWN		
16A	PINK	270	37	BLACK-YELLOW	268	RED		
19	BLUE-RED	40	BLUE-WHITE	461	YELLOW-GREEN			
		44	BLUE	●	SPLICE			

# 1965 MUSTANG ACCESSORIES



**NOTE:**  
 FOR THE MUSTANG POWER TOP SCHEMATIC,  
 REFER TO THE FALCON PORTION OF THE  
 FALCON/COMET POWER TOP SCHEMATIC,  
 PAGE 1.2 OF THE POWER ASSISTS SECTION.

## 1965 MUSTANG POWER TOP



WIRING COLOR CODE	
122	YELLOW
123	RED
175	BLACK

**1965 FALCON/COMET CONVERTIBLE TOP**